

DRAWING NUMBER  
48/147

DRAWING NUMBER

DRAWING NUMBER

DRAWING NUMBER

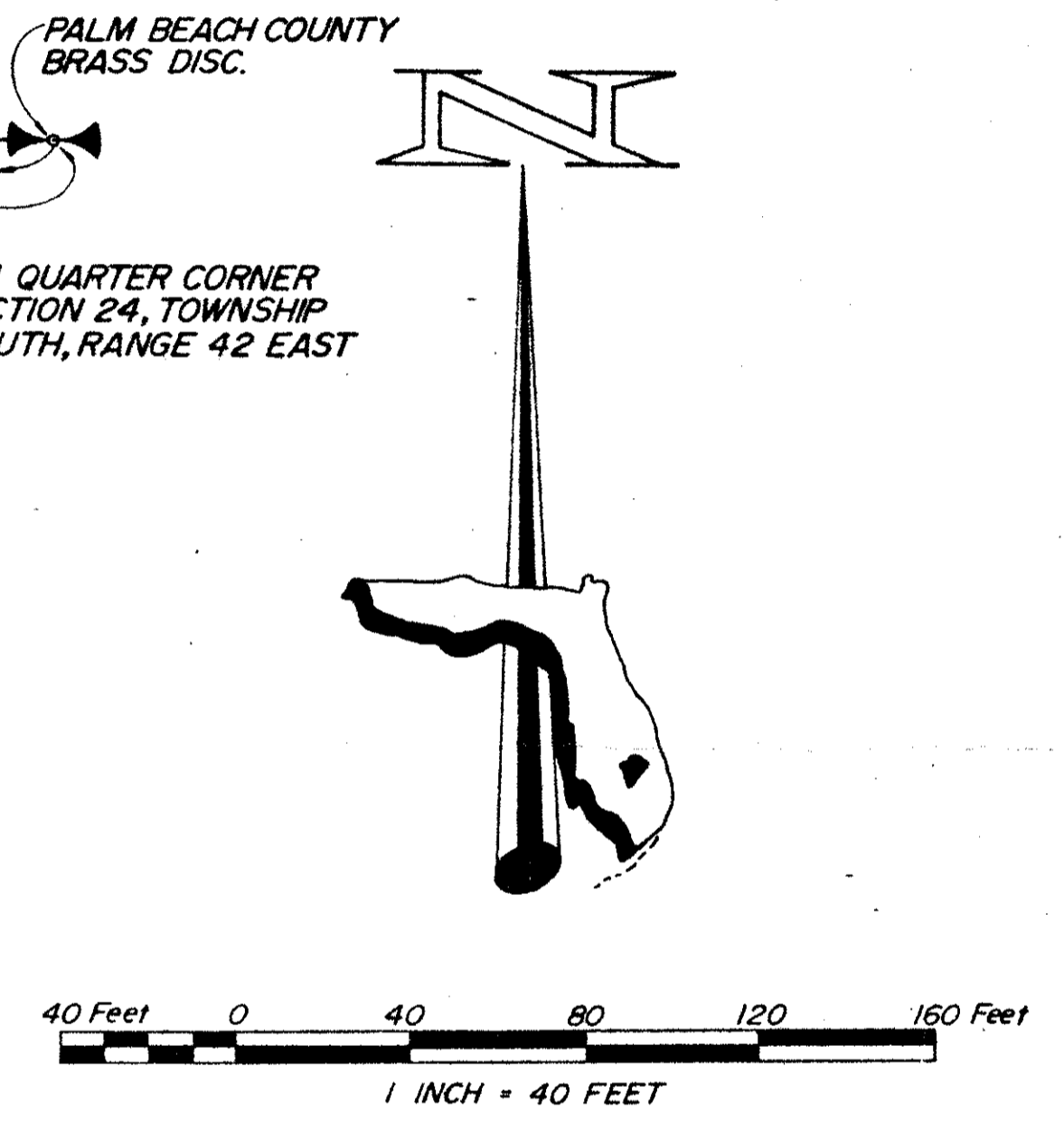
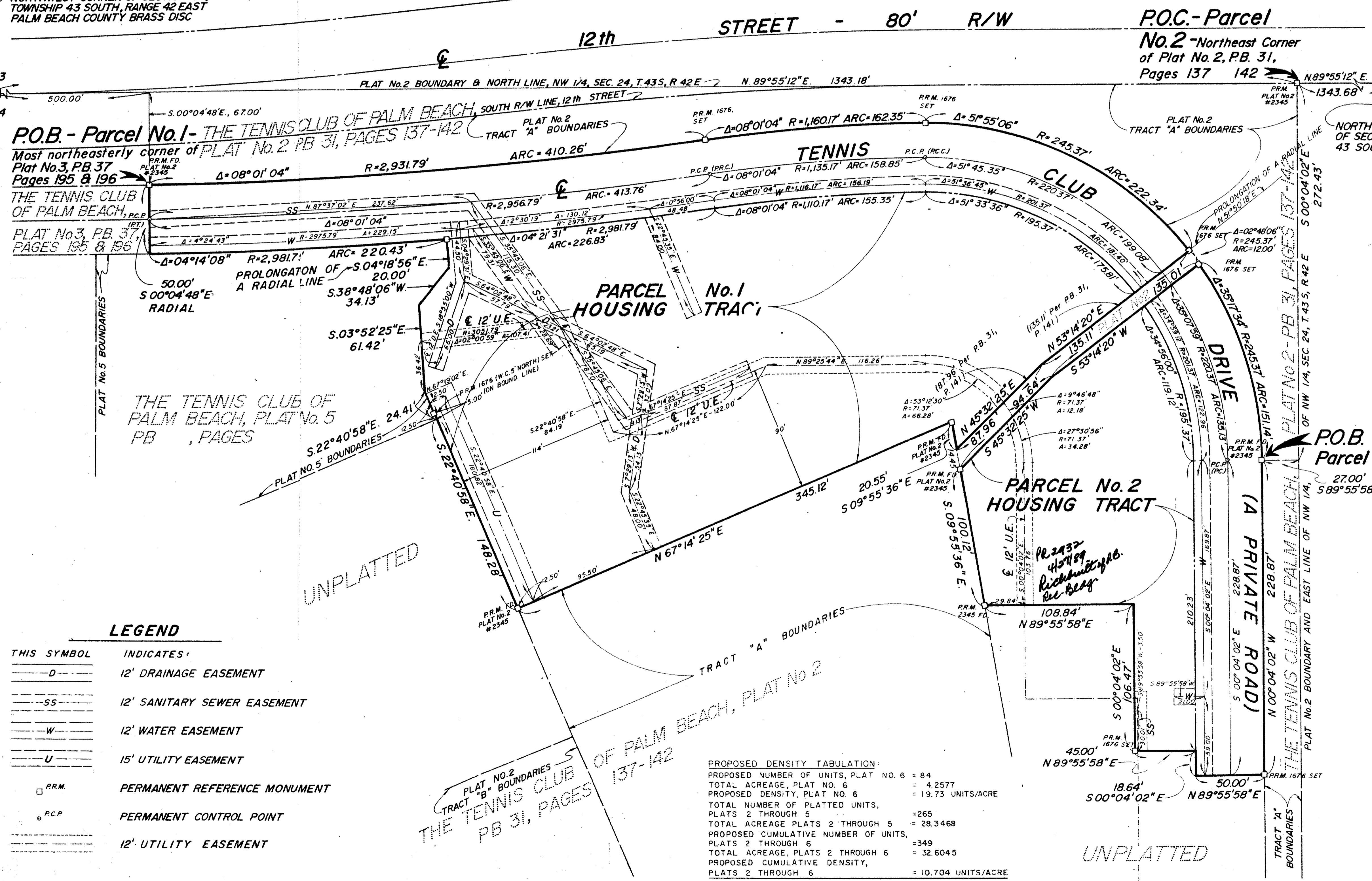
# A PLANNED UNIT DEVELOPMENT

# THE TENNIS CLUB OF PALM BEACH, PLAT No. 6

## IN SECTION 24, TOWNSHIP 43 SOUTH, RANGE 42 EAST, PALM BEACH COUNTY, FLORIDA

### FEBRUARY 1984

NORTHWEST CORNER OF SECTION 24, TOWNSHIP 43 SOUTH, RANGE 42 EAST, PALM BEACH COUNTY BRASS DISC



**BEARING DATUM**  
 ALL BEARINGS SHOWN HEREON ARE RELATIVE TO AN ASSUMED BEARING OF N 89° 55' 12" E ALONG THE NORTH LINE OF THE NORTHWEST ONE QUARTER (NW 1/4) OF THE NORTHWEST ONE QUARTER (NW 1/4) OF SECTION 24, TOWNSHIP 43 SOUTH, RANGE 42 EAST

0317-002  
**NOTES:**

1. NO BUILDINGS OR ANY KIND OF CONSTRUCTION OR TREES OR SHRUBS SHALL BE PLACED WITHIN EASEMENTS
2. DRAINAGE EASEMENTS TAKE PRECEDENCE OVER UTILITY EASEMENTS.
3. MAINTENANCE ACCESS RIGHTS ARE GRANTED OVER ALL TRACTS SHOWN HEREON FOR THE PURPOSE OF MAINTENANCE OF UTILITIES AND DRAINAGE.

48/147  
 IN 7 TO SHEETS, SHEET No. 2.

**PROPOSED DENSITY TABULATION**

PROPOSED NUMBER OF UNITS, PLAT NO. 6	= 84
TOTAL ACREAGE, PLAT NO. 6	= 4.2577
PROPOSED DENSITY, PLAT NO. 6	= 19.73 UNITS/ACRE
TOTAL NUMBER OF PLATTED UNITS, PLATS 2 THROUGH 6	= 265
TOTAL ACREAGE PLATS 2 THROUGH 6	= 28.3468
PROPOSED CUMULATIVE NUMBER OF UNITS, PLATS 2 THROUGH 6	= 349
TOTAL ACREAGE, PLATS 2 THROUGH 6	= 32.6045
PROPOSED CUMULATIVE DENSITY, PLATS 2 THROUGH 6	= 10.704 UNITS/ACRE

**LEGEND**

THIS SYMBOL	INDICATES:
---D---	12' DRAINAGE EASEMENT
---SS---	12' SANITARY SEWER EASEMENT
---W---	12' WATER EASEMENT
---U---	15' UTILITY EASEMENT
□ P.R.M.	PERMANENT REFERENCE MONUMENT
○ P.C.P.	PERMANENT CONTROL POINT
---	12' UTILITY EASEMENT

FLORIDA SURVEYING & MAPPING, INC.  
 REGISTERED LAND SURVEYORS  
 WEST PALM BEACH, FLORIDA 33406

SCALE	1" = 40'	BY		DATE	
DATE	FEBRUARY 1984				
DR	J.M.C.				

THE TENNIS CLUB OF PALM BEACH, PLAT No. 6 183-217